

Directions for Use

Needle Free Injection Port

Self-Opening Split Septum

Cat No: **50.252P**

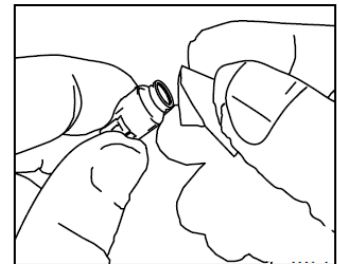


CAUTIONS

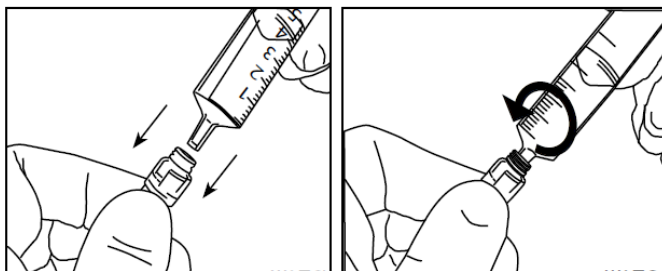
- To prevent valve damage, **DO NOT USE** needles or blunt cannula to access the swabable valve.
- Carefully follow the directions below to maintain the valve integrity.
- Only use standard Luer connection devices; non-standard syringes or connectors can damage the swabable valve. Syringes and male Luer connectors have a large variety of configurations and can vary significantly in design and dimensions.
- **DO NOT OVER-TIGHTEN** connections. **DO NOT USE** any instruments to tighten connections.

USING THE INJECTION SITE

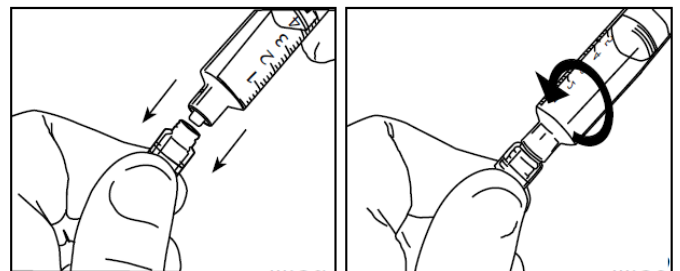
1. Using aseptic technique, remove the sterile device from the package. Discard if packaging is not intact.
2. Using a sterile antiseptic wipe, swab the surface of the valve. Let it air dry.
3. Carefully connect the syringe to the valve by pushing the syringe straight into the swabable valve using a clockwise, twisting motion. **DO NOT** try to insert at an angle or try to pry open the slit in the valve.



Male Luer Slip (MLS)



Male Luer Lock (MLL)



4. To completely clear fluid pathway, flush the swabable valve after each use with 3 x 3mL saline or as per facility protocol
5. Twist syringe counter clockwise to disconnect. The swabable valve completely closes after each use and therefore does not require a separate injection site cap.
6. Dispose of used device per facility protocol for bio contaminated materials.