

Directions for Use

4-Way Stopcock with H-Port

Split Septum – High Flow Rate

Cat No: **50.260H**

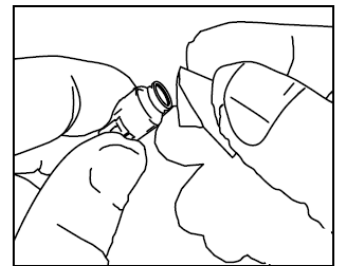


CAUTIONS

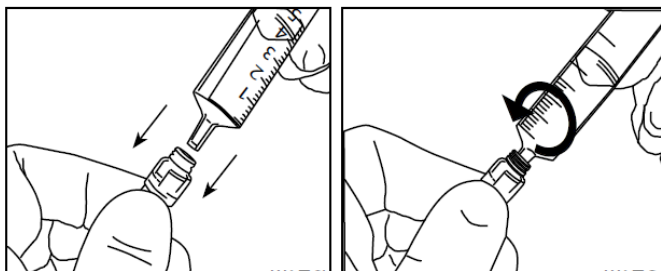
- To prevent valve damage, **DO NOT USE** needles or blunt cannula to access the swabable valve.
- Carefully follow the directions below to maintain the valve integrity.
- Only use standard Luer connection devices; non-standard syringes or connectors can damage the swabable valve. Syringes and male Luer connectors have a large variety of configurations and can vary significantly in design and dimensions.
- **DO NOT OVER-TIGHTEN** connections. **DO NOT USE** any instruments to tighten connections.

USING THE 4-WAY STOPCOCK

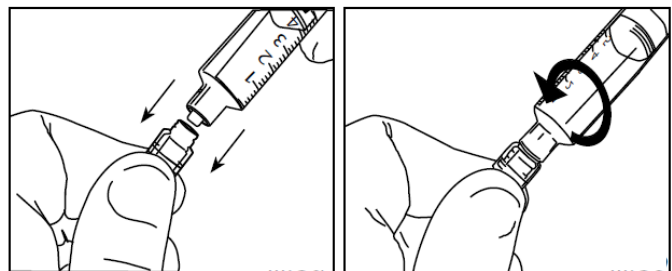
1. Using aseptic technique, remove the sterile device from the package. Discard if packaging is not intact.
2. Prime stopcock before connecting to patient. Priming volume is approximately 0.25mL. Ensure all air bubbles are removed.
3. Using a sterile alcohol wipe, swab the surface of the valve. Let it air dry.
4. Carefully connect the syringe to the valve by pushing the syringe straight into the swabable valve using a clockwise, twisting motion. **DO NOT** try to insert at an angle or try to pry open the slit in the valve.



Male Luer Slip (MLS)



Male Luer Lock (MLL)



5. Twist syringe counterclockwise to disconnect. The swabable valve completely closes after each use and therefore does not require a separate injection site cap.
6. Flush the swabable valve after each use as per facility protocol.
7. Dispose of used device per facility protocol for biocontaminated materials. Do not separate stopcock from the IV set.

