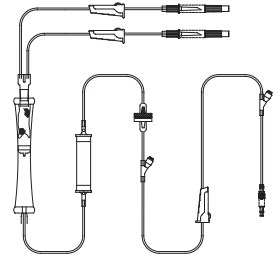


Transfusion Hand Pump Set

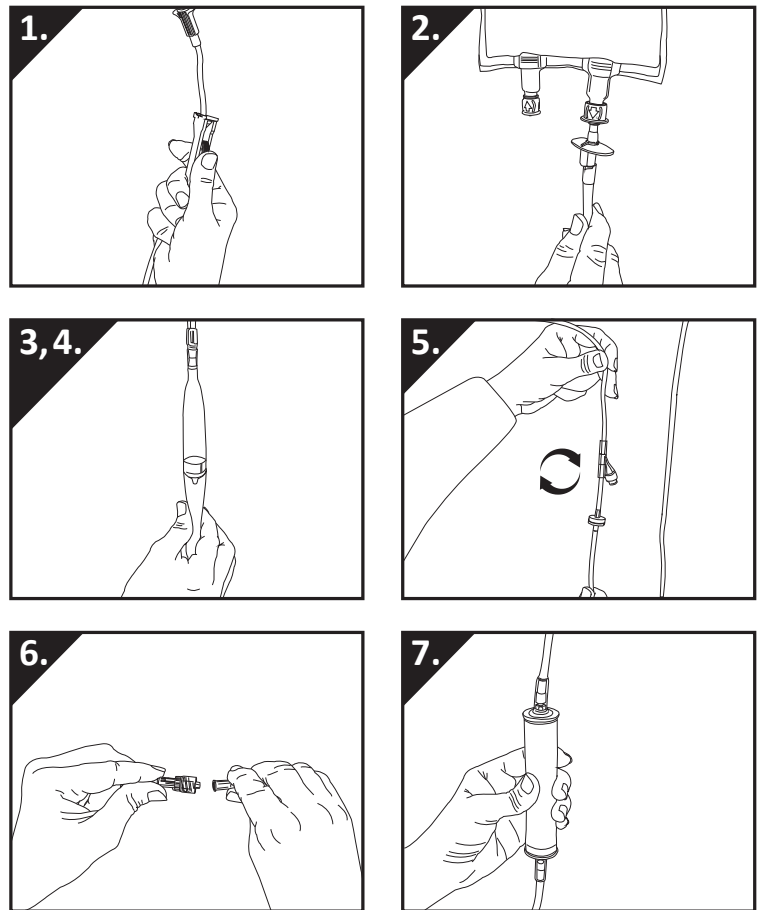
Directions for Use Transfusion Pump Set

Cat No: **33.800H**



To prime line:

1. Close **all** roller regulators.
2. Remove protective caps from dual perforators & insert into fluid containers.
3. Open roller regulator below spike. Prime set by squeezing the lower half of the drip chamber until half full.
4. Open roller regulator below chamber.
5. Invert trauma pump & injection site until all air is expelled from device. Close roller regulator below chamber.
6. Remove the protective cap from luer connector, secure line by inserting into access device & engaging rotating collar.
7. Control flow rate with roller regulator or the trauma pump chamber.



USING THE INJECTION SITE

1. Using a sterile antiseptic wipe, swab the surface of the valve. Let it air dry.
2. Use a standard luer lock to access needlefree injection port
3. Connect the syringe to the injection port by pushing the syringe straight into the swabable valve using a clockwise, twisting motion.



Male Luer Slip (MLS)



Male Luer Lock (MLL)



4. On disconnection & between use, use of caps is not required.

AUG 2015 Rev 1.0